

## Request for Quotation

**REF: AE/AK/06-2013**

Sub : Quotation for supply of: **Load cell (with associated signal conditioner)**

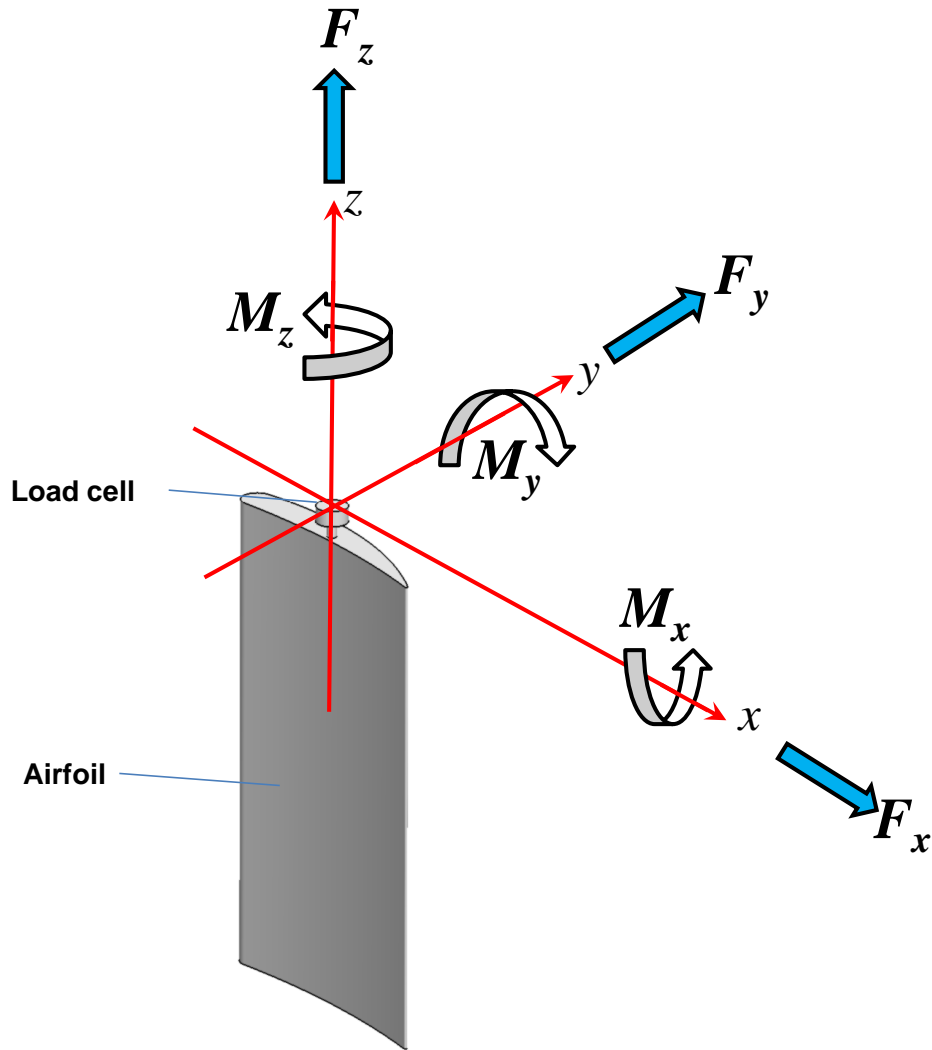
With reference to the subject mentioned above, you are invited to submit the quotation in a sealed cover in order to reach us before 15/12/2013 in the form of a hard copy to the address mentioned below.

The requirement is a load cell for the purposes of measuring force and moment components in a typical laboratory experiment.

The following are the specifications of the load cell:

No. of load components	SIX ( $F_x, F_y, F_z, M_x, M_y, M_z$ )	
Measurable loads upper limit (minimum requirement)	$F_x$	$\pm 2$ N
	$F_y$	$\pm 40$ N
	$F_z$	$\pm 15$ N
	$M_x$	$\pm 4$ Nm
	$M_y$	$\pm 2$ Nm
	$M_z$	$\pm 4$ Nm
Resolution	better than 0.01 N	
Output	Analogue voltage	

The load cell must be able to measure loads in both directions for each axis.  
The axis conventions are as shown in the figure.



Please submit the technical specs and the financial quotations separately.

Best regards,  
Sincerely,

**A. Kushari**  
**Department of Aerospace Engineering**  
**IIT Kanpur,**  
**Kanpur 208016, India.**  
akushari@iitk.ac.in